

#1240: HyperStudy - User Utility

Product: HyperStudy

Product Version: HyperStudy 14.130 or above

Topic Objective

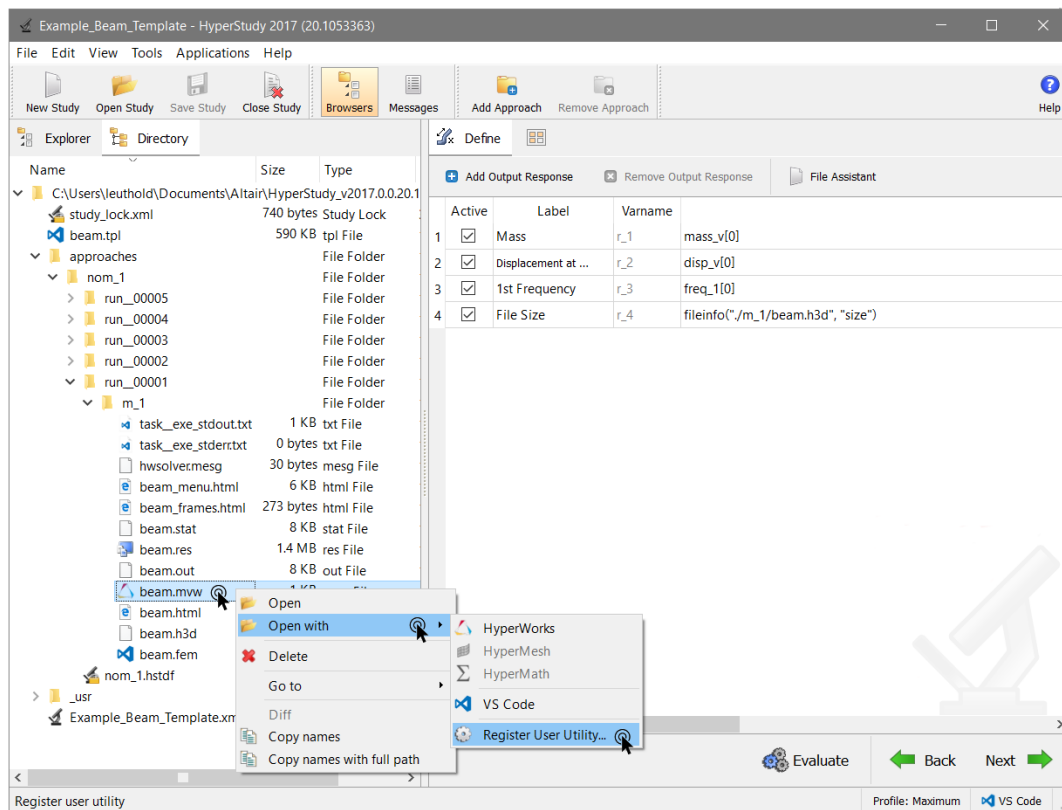
User utility in HyperStudy

Topic Details

User-utilities are one-off tools with optional arguments are most useful in the Study directory view. We have predefined “Open with” operations for

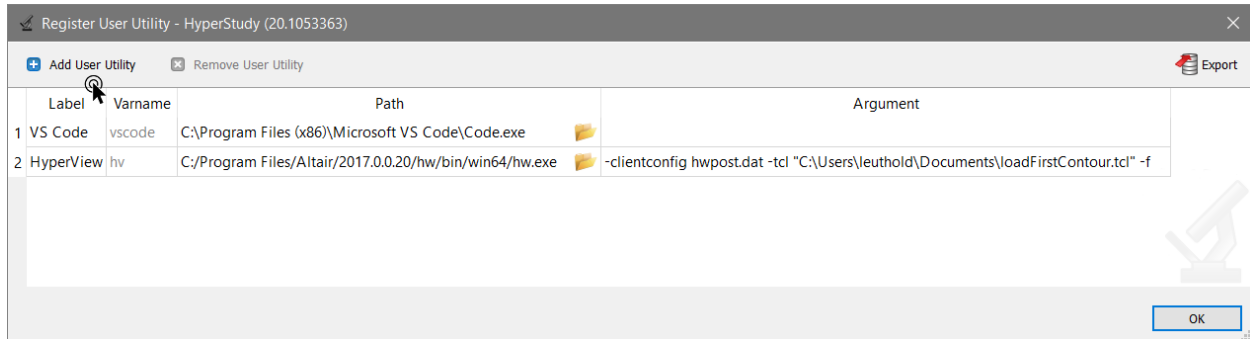
- HyperWorks (*.mww)
- HyperMesh (*.hm)
- HyperMath (*.hml)

With user utilities, you can extend that list. Below you see us adding a HyperView option. The selected filename is appended to the tool command line.

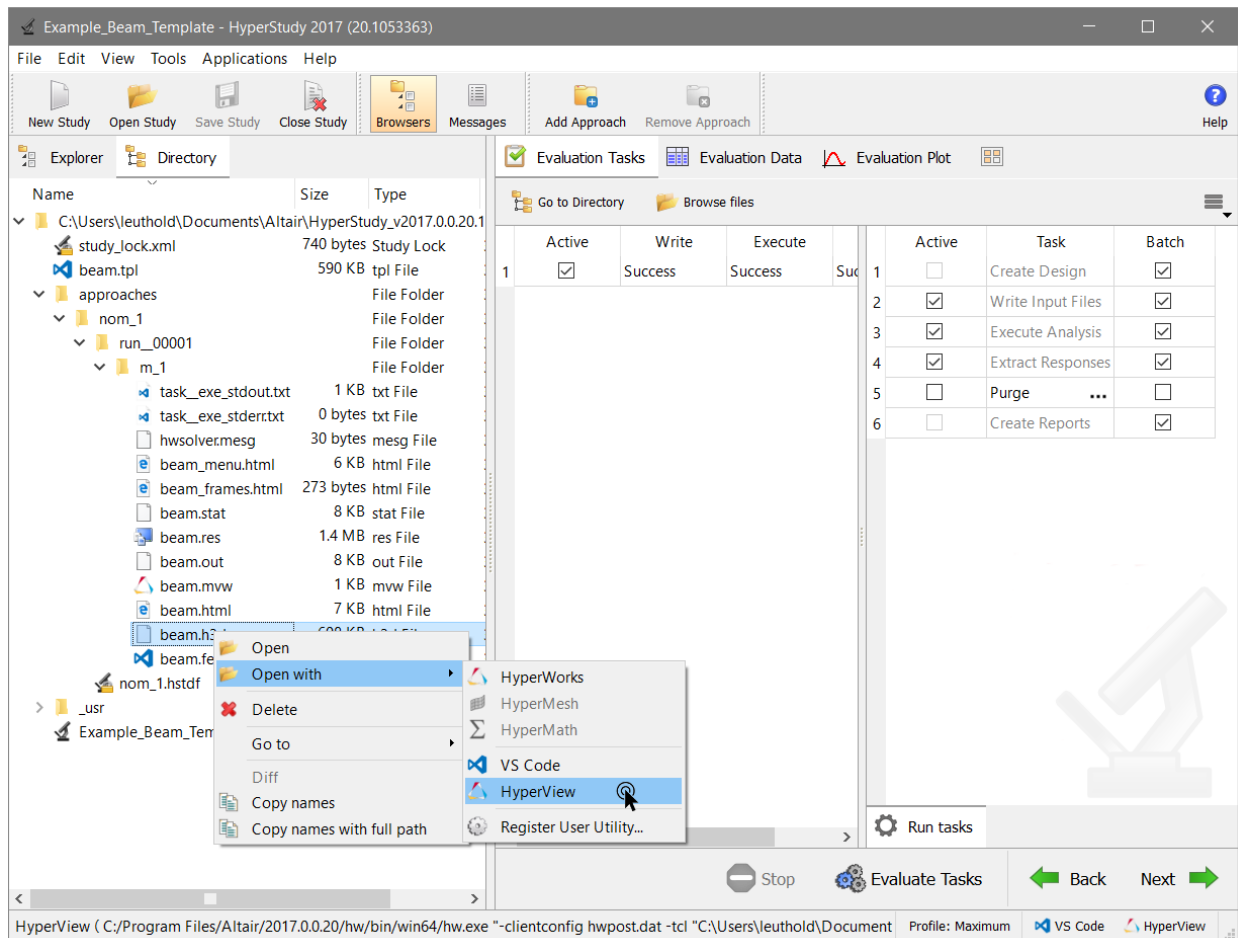


Define a HyperView utility that points to the hw.exe with custom arguments:

- -clientconfig hwpost.dat -tcl "C:\Users\leuthold\Documents\loadFirstContour.tcl" -f <selected filename appended at runtime>



Invoke the utility on an example H3D output file.



Launching HyperView and loading the H3D file.

