

#1307: HyperStudy – Lookup Table

Product: HyperStudy

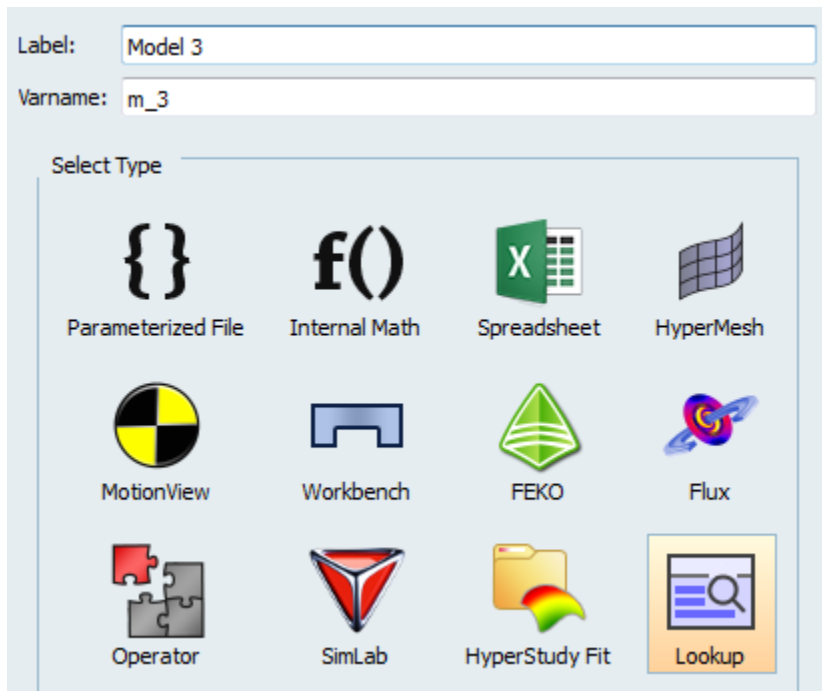
Product Version: HyperStudy 2017.2.2 or above

Topic Objective

Lookup tables in HyperStudy.

Topic Details

Lookup table allows connecting quickly and efficiently HyperStudy to a tabular data (csv file). Using a look-up model, you can point to your .csv file with your inputs and outputs. You then need to enter the number of inputs and HyperStudy will then import all the inputs and outputs with their labels and values. During evaluation the model returns output responses that match the given inputs, or it will fail if there are no valid matches. This model can be used to streamline studies that use pre-existing data, or can be used as conditional logic in multi-model studies. For instance, with Lookup model you can use your data collected from measurements to investigate the relationships between inputs and outputs using DOE post-processing tools; or to build a fit approximation and make predictions.



Model types in HyperStudy