

#1313: HyperCrash – Contour Check of the Model

Product: HyperCrash

Product Version: HyperCrash 14.0 or above

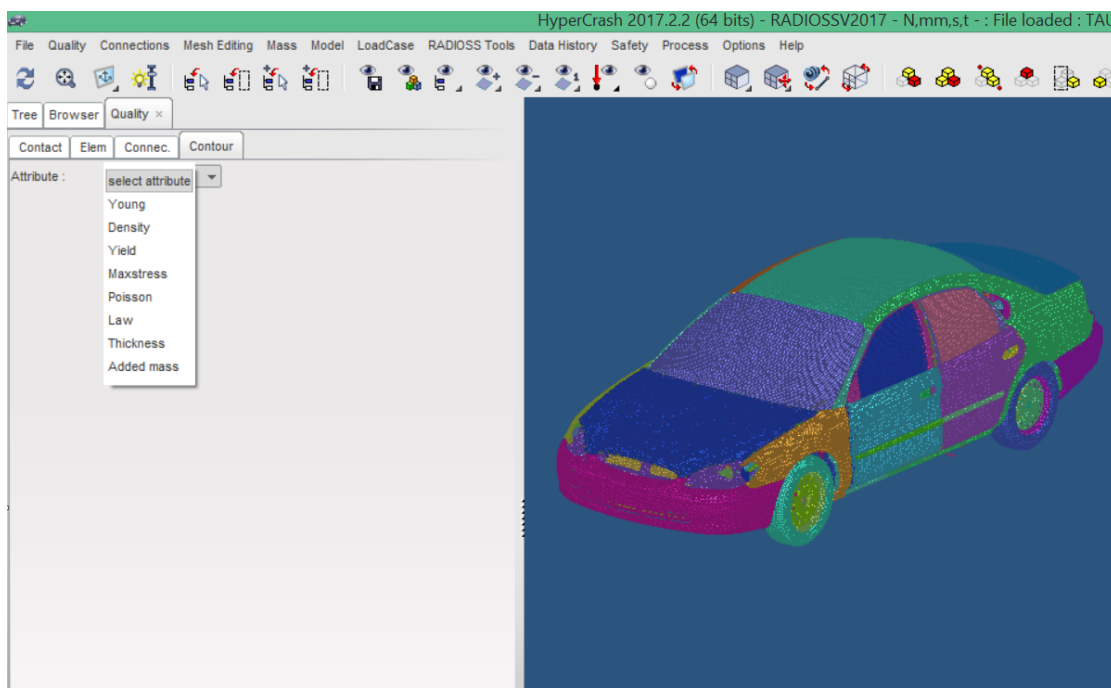
Topic Objective

Contour check of the model in HyperCrash.

Topic Details

Users can perform a contour check on various parameters in the model using this option. There are various attributes which user can cross check in the model using different contours.

From the Quality Menu select contour check, and in attributes panel many parameters are available for check.

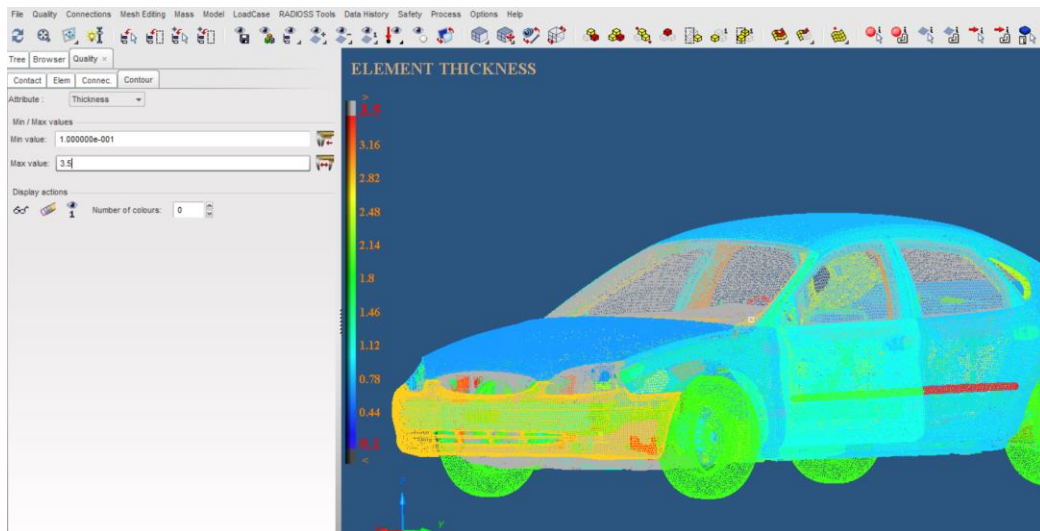


We will check the thickness of the parts using this option.
Select Thickness from the drop-down menu next to Attributes.
Enter a value in the Min value: field.


Click  to reset the minimum value of the mode.

Enter a value in the Max value: field. Click  to reset the maximum value of the mode.

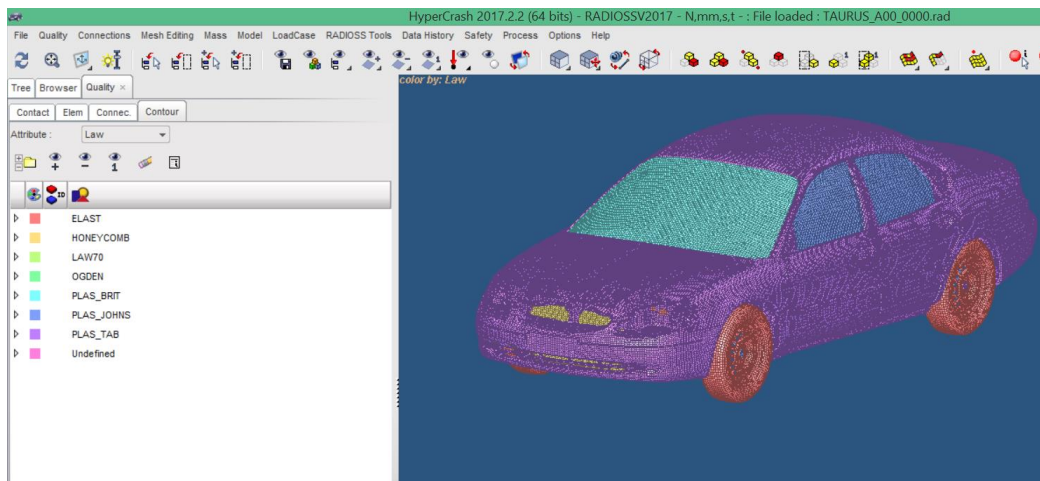
HyperCrash displays a thickness range in the left of the graphic window and displays in color the parts with iso-thicknesses.



The model is displayed with different contours based on the minimum and maximum thickness range provided by the user. All the parts with thicknesses out of range are displayed in grey.

Using  1 user can display only the parts that have a thickness value included in the defined range and select them in the tree.

Using 'Law' option HyperCrash displays the model with different contours based on the material laws assigned to the model.



Similarly using other attributes users can contour check their model. This feature helps the users to have a quick cross-check of the model before run.